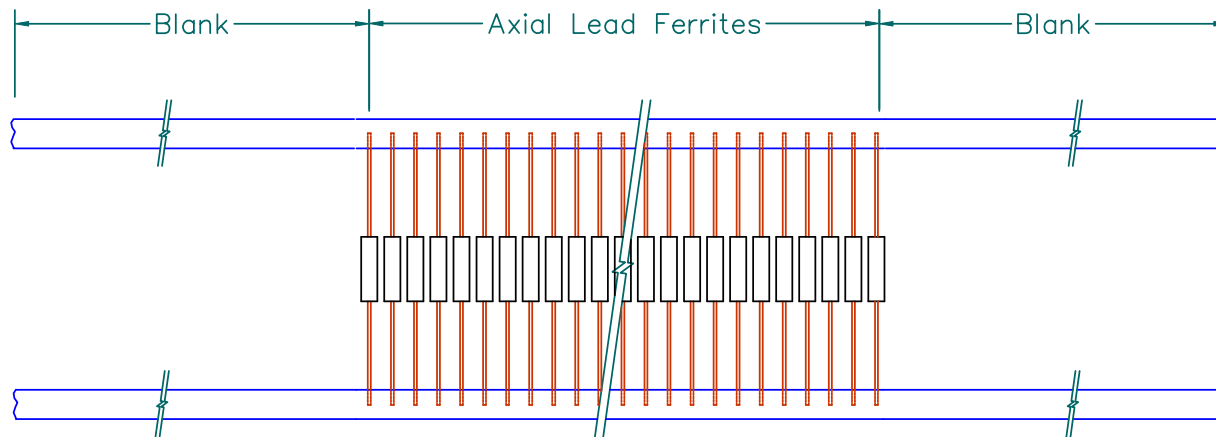
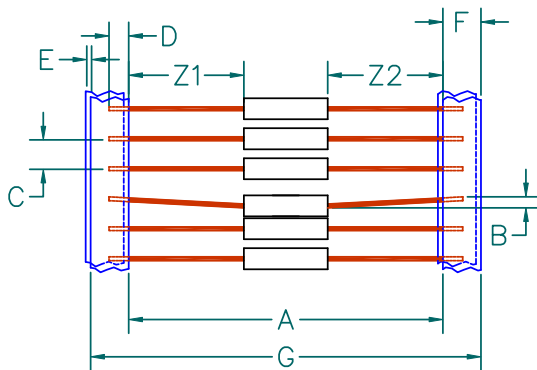
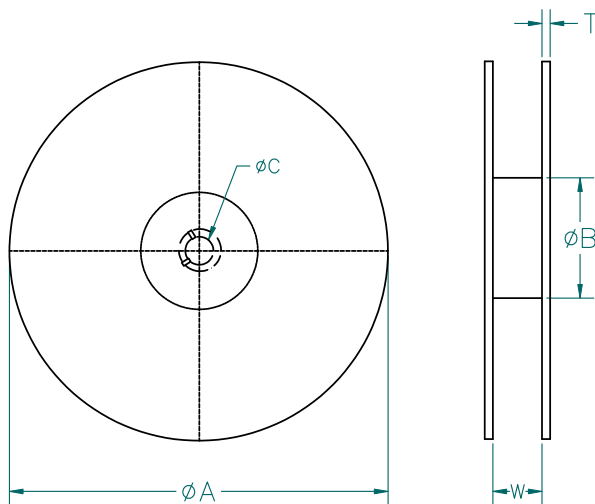


28L0138-40R

OBSOLETE



A	52.4 [2.06]	± 1.50 [.059]
B	1.19 [.047]	± MAX.
C	5.00 [.197]	± 0.51 [.020]
D	3.18 [.125]	± TYP.
E	0.81 [.032]	± MAX.
F	6.35 [.250]	± 0.41 [.016]
G	65.1 [2.56]	± TYP.
Z1	21.72 [.855]*	± TYP.
Z2	21.72 [.855]	± TYP.



A	355.6 ± 2.0 [14.00 ± .078]
B	77.47 ± 1.0 [3.05 ± .039]
C	15.88 ± 0.5 [.625 ± .020]
W	71.1 ± 1.0 [2.80 ± .039]
T	2.16 [.085]

UNIT MEASUREMENT:
mm /inches

* REF. EIA 296 E "LEAD TAPING OF COMPONENTS IN AXIAL LEAD CONFIGURATION FOR AUTOMATIC HANDLING".

NO MORE THAN 1.40 [.055] DIFFERENCE BETWEEN Z1 & Z2

DIMENSIONS ARE IN mm (INCHES).			THIS DOCUMENT CONTAINS INFORMATION WHICH IS PROPRIETARY AND CONFIDENTIAL TO STEWARD. NO PRODUCTION OR PUBLICATION OF THIS DOCUMENT IN WHOLE OR IN PART SHALL BE MADE WITHOUT WRITTEN AUTHORIZATION FROM STEWARD.		
F	UPDATE FORMAT, CHG RATED CURRENT FROM 10,000 ADDED NOTES	10/11/01	JRK	Steward	
E	ADDED (*NOTE&DIM)ON SHT30F4 CORRECTED DIM D ON SHEET 20F4	10/13/98	DTR		
D	CHANGE DIM. "G" ON THE TAPE & MODIFIED THE DIMENSIONS ON THE REEL	07/15/98	DTR	PROJECT/PART NUMBER:	REV
C	UPDATE PRINT FORMAT	06/25/98	DTR	28L0138-40R	F
B	MATCH REV LEVEL ON 4 OF 4	06/25/98	DTR	PART TYPE:	DRAWN BY:
A	ORIGINAL DRAFT	06/25/98	DTR	ASSEMBLY	DTR
REV	DESCRIPTION	DATE	INT	DATE:	SCALE:
				06/30/98	NTS
				CAD #	SHEET:
				28L0138-40R-3-F	B0138
				TOOL #	3 of 3
				B0138	